

## Main Feature



1. 25Amp motor lock load.
2. Small size with high rating.
3. Single or dual version available.
4. Standard type contact form SPDT and SPST are available for customers' selection.
5. High performance PCB Relay.
6. Comply with RoHS, REACH and ELV regulations

## Contact Rating

Load Type	GIN (DM)	GIN (D)
Rated Load (Resistive)	25A 16VDC	25A 16VDC
Rated Carrying Current	25A	25A
Max. Allowable Voltage	DC 16V	DC 16V
Max. Allowable Current	30A	30A
Min. Switching Load	1A 6VDC	1A 6VDC
Contact Material	Ag Alloy	Ag Alloy
Contact Form	SPST / DPST	SPDT / DPDT

## Application

Power Window Control, Seat adjustment, Sunroof Control, Wiper Control, Lighting Control, Power Mirror Control

## Performance (at Initial Value)

- Contact Resistance ..... 100 mΩ Max. @1A,6VDC
- Operate Time ..... 10mSec. Max.
- Release Time ..... 10mSec. Max.
- Dielectric Strength:
  - Between Coil & Contact..... 500VAC at 50/60 Hz for one minute
  - Between Contacts ..... 500VAC at 50/60 Hz for one minute
- Insulation Resistance ..... 100MΩ Min. at 500VDC
- Max. On/Off Switching:
  - Electrical ..... 6 Cycles per Minute
  - Mechanical..... 300 Cycles per Minute

- Temperature Range.....-40~+105 °C
- Humidity Range ..... 45~80% RH.
- Coil Temperature Rise.....50 °C Max.
- Vibration:
  - Endurance ..... 10 to 55 Hz dual amplitude width 1.5 mm
  - Error Operation ..... 10 to 55 Hz dual amplitude width 1.5mm
- Shock:
  - Endurance ..... 1,000 m/S<sup>2</sup>
  - Error Operation ..... 100 m/S<sup>2</sup>
- Life Expectancy:
  - Electrical..... 10<sup>5</sup> Operations at Rated Resistive Load
  - Mechanical ..... 10<sup>7</sup> Operations at No load condition
- Weight.....About 4g

## Safety Standard & File Number

- NIL

## Coil Specification (at 20 °C)

Coil Sensitivity	Nominal Voltage (VDC)	Nominal Current (mA)	Coil Resistance (W±10%)	Power Consumption (W±10%)	Pull-In Voltage (VDC)	Drop-Out Voltage (VDC)	Maximum Allowable Voltage (VDC)
GIN	9	70.8	127	Abt. 0.64	60% maximum	5% minimum	130%
	12	53.3	225				
	24	26.7	900				
	48	16.7	2880	Abt. 0.8			

## Ordering Information

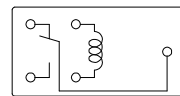
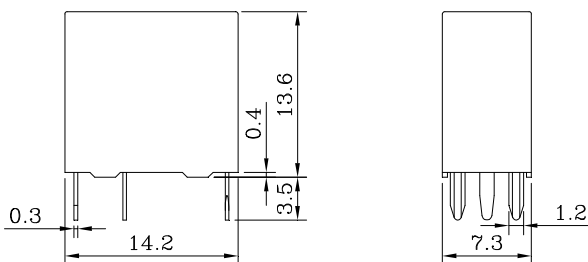
<b>GIN - SS - 1 12 D M</b>	<b>Contact Form:</b>	<b>Nil:</b> Form C <b>M:</b> Form A
	<b>Coil Type:</b>	<b>D:</b> Standard DC
	<b>Coil Voltage:</b>	<b>09:</b> 9V, <b>12:</b> 12V, <b>24:</b> 24V, <b>48:</b> 48V
	<b>Number of Pole:</b>	<b>1:</b> Single Relay <b>2:</b> Dual Relay
	<b>Type of Sealing:</b>	<b>SS:</b> RT II Flux Proofed <b>SH:</b> RT III Wash Tight
	<b>TYPE:</b>	<b>GIN</b>

## Classification

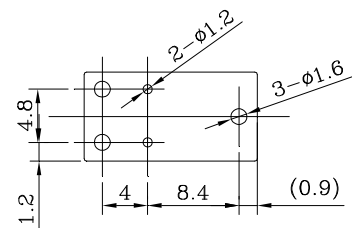
Model	GIN			
	Single Relay		Dual Relay	
Single or Dual Relay				
Contact Form	1C	1A	2C	2A
Flux Proofed	GIN-SS-1□□D	GIN-SS-1□□DM	GIN-SS-2□□D	GIN-SS-2□□DM
Wash Tight	GIN-SH-1□□D	GIN-SH-1□□DM	GIN-SH-2□□D	GIN-SH-2□□DM

Dimension ( ≤ 5mm ± 0.2mm, > 5mm ± 0.3mm, the tolerance of PCB thru hole: +0.1mm)

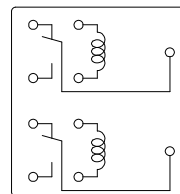
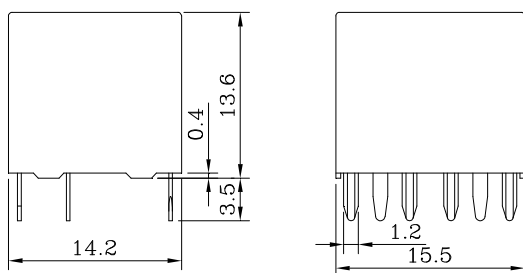
### Single Type



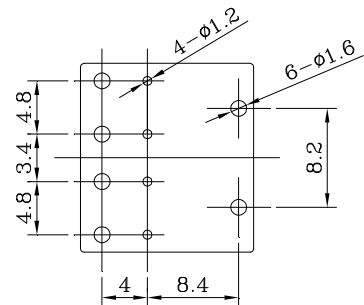
(Bottom View)



### Dual Type



(Bottom View)



V.01DS