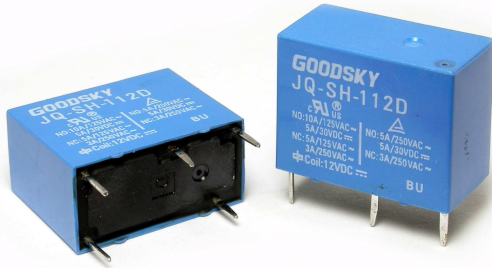


Main Feature



1. Small size with slim width.
2. SPST and SPDT Contact forms available.
3. Contact Capacity is 10A.
4. Surge Strength up to 8,000V.
5. UL Class F insulation available.
6. Halogen Free series available.
7. Comply with RoHS and REACH regulations



Contact Rating

| Load Type | JQ (DM/TM/LM) | JQ (D/T) |
|----------------------------|---------------|----------------|
| Rated Load (Resistive) | 10A 125VAC | NO: 10A 125VAC |
| | 5A 250VAC | 5A 250VAC |
| | 5A 30VDC | 5A 30VDC |
| | - | NC: 5A 125VAC |
| | - | 3A 250VAC |
| Rated Carrying Current | 5A | 5A |
| Max. Allowable Voltage | AC 250V | AC 250V |
| | DC 30V | DC 30V |
| Max. Allowable Current | 10A | 10A |
| Max. Allowable Power Force | 1,250VA | 1,250VA |
| | 150W | 150W |
| Contact Material | Ag Alloy | Ag Alloy |
| Contact Form | SPST | SPDT |

Application

Air Conditioner, Fan Control, Home Appliances, Timer and Thermal Control Application.

Performance (at Initial Value)

- Contact Resistance 100mΩMax.@1A,6VDC
- Operate Time..... 6 mSec. Max.
- Release Time 2 mSec. Max.
- Dielectric Strength:
 - Between Coil & Contact..... 4,000VAC at 50/60 Hz for one minute
 - Between Contacts 1,000VAC at 50/60 Hz for one minute
- Surge Strength..... 8,000V (between coil & contact 1.2x50μSec.)
- Insulation Resistance 100 MegaΩ Min.at 500VDC
- Max. On/Off Switching:
 - Electrical..... 6 Cycles per Minute
 - Mechanical 300 Cycles per Minute
- Temperature Range..... -30~+70°C
- Humidity Range..... 45~85% RH.
- Coil Temperature Rise..... 45°C Max.

- Vibration:
 - Endurance 10 to 55 Hz dual. amplitude width 1.5mm
 - Error Operation..... 10 to 55 Hz dual. amplitude width 1.5mm
- Shock:
 - Endurance 1,000 m/S²
 - Error Operation..... 100 m/S²
- Life Expectancy:
 - Mechanical 10⁷ Operations at No Load condition
 - Electrical 10⁵ Operations at Rated Resistive Load
- Weight About 5.6g

Safety Standard & File Number

- UL & C-UL E141060
- TÜV R50008011
- VDE 40010922

Coil Specification (at 20°C)

| Coil Sensitivity | Nominal Voltage (VDC) | Nominal Current (mA) | Coil Resistance ($\Omega \pm 10\%$) | Power Consumption (W) | Pull-In Voltage (VDC) | Drop-Out Voltage (VDC) | Maximum Allowable Voltage (VDC) |
|------------------|-----------------------|----------------------|---------------------------------------|-----------------------|-----------------------|------------------------|---------------------------------|
| JQ-D/DM | 3 | 150 | 20 | Abt. 0.45 | 75% Maximum | 5% Minimum | 120% |
| | 5 | 91 | 55 | | | | |
| | 6 | 75 | 80 | | | | |
| | 9 | 50 | 180 | | | | |
| | 12 | 37.5 | 320 | | | | |
| | 24 | 18.8 | 1,280 | | | | |
| JQ-T/TM | 3 | 133.3 | 22.5 | Abt. 0.4 | 75% Maximum | 5% Minimum | 120% |
| | 5 | 80 | 62.5 | | | | |
| | 6 | 66.7 | 90 | | | | |
| | 9 | 44.4 | 202 | | | | |
| | 12 | 33.3 | 360 | | | | |
| | 24 | 16.7 | 1,440 | | | | |
| JQ-LM | 3 | 67 | 45 | Abt. 0.2 | 75% Maximum | 5% Minimum | 120% |
| | 5 | 40 | 125 | | | | |
| | 6 | 33.3 | 180 | | | | |
| | 9 | 22.5 | 400 | | | | |
| | 12 | 16.7 | 720 | | | | |
| | 24 | 8.3 | 2,800 | | | | |

Ordering Information

JQ - SS - 1 12 D M F

Insulation System:

Nil: Standard Class

F: Class F

Contact Form:

Nil: One Form C (for D, T Type Only)

M: One Form A

Coil Sensitivity:

D: Standard DC Coil

T: Medium DC Coil

L: High DC Coil

Coil Voltage:

03: 3V, 05: 5V, 06: 6V, 09: 9V, 12: 12V, 24: 24V

Number of Pole:

1: One Pole

Type of Sealing:

SS: RT II Flux Proofed

SH: RT III Wash Tight

Type:

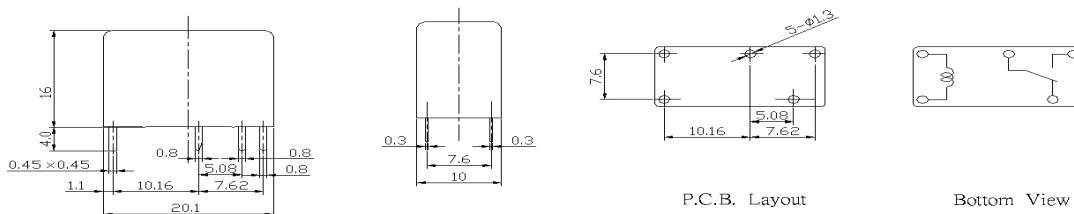
JQ

Classification

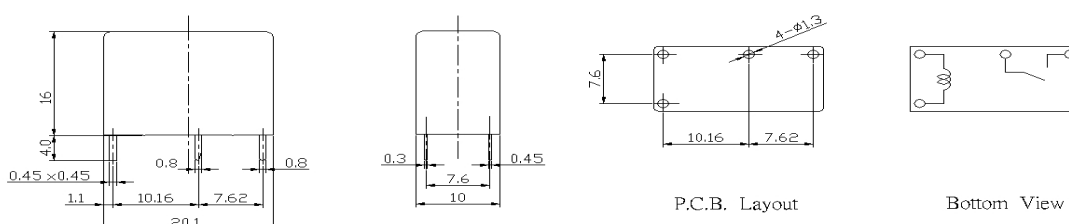
| Model | JQ | | | | |
|--------------|------------------|----------------|------------------|----------------|--------------|
| | 1C | | 1A | | |
| Contact Form | | | | | |
| Coil Type | Standard DC Coil | Medium DC Coil | Standard DC Coil | Medium DC Coil | High DC Coil |
| Flux Proofed | JQ-SS-1□□D | JQ-SS-1□□T | JQ-SS-1□□DM | JQ-SS-1□□TM | JQ-SS-1□□LM |
| Wash Tight | JQ-SH-1□□D | JQ-SH-1□□T | JQ-SH-1□□DM | JQ-SH-1□□TM | JQ-SH-1□□LM |

Dimension ($\leq 5\text{mm} \pm 0.2\text{mm}$, $> 5\text{mm} \pm 0.3\text{mm}$, the tolerance of PCB thru hole: $+0.1\text{mm}$)

JQ-SS/SH-D/T/L



JQ-SS/SH-DM/TM/LM



V.01DS