



Main Feature

1. 1 and 2-Poles version available with high switching current up to 25A.
2. Plug-in Terminal with Flanged Case is available for customer's various applications.
3. Both AC and DC coil available.
4. LED version available.

Contact Rating

Load Type	RPT (No Common)	RPT-2P	RPT- 3P	RP-2P	RP-3P
Rated Load (Resistive)	30A/28VDC	20A/15VDC	20A/15VDC	10A 240VAC	10A 240VAC
	30A/120VAC	13A/28VDC	13A/28VDC	13A 120VAC	13A 120VAC
	30A/240VAC	25A/120VAC	20A/120VAC	13A 28VDC	13A 28VDC
	10A/600VAC	25A/240VAC	15A/240VAC	-	-
	-	5A/600VAC	-	-	-
Contact Capacity	1HP/120VAC	3/4HP/120VAC	1/2HP/120VAC	1/2HP 240VAC	1/2HP 240VAC
	1 HP/200~600VAC	1HP/240/480/600VAC	1/2HP/208/240VAC	1/3HP 120VAC	1/3HP 120VAC
Rated Carrying Current	30A	25A	20A	13A	13A
Max. Allowable Voltage	AC 600V	AC 600V	AC 300V	AC 300V	AC 300V
	DC 28V	DC 28V	DC 28V	DC 48V	DC 48V
Max. Allowable Current	30A	25A	20A	13A	13A
Max. Allowable Power Force	7,200VA	6,000VA	3,600VA	2,400VA	2,400VA
	840W	364W	364W	364W	364W
Contact Material	Ag Alloy	Ag Alloy	Ag Alloy	Ag Alloy	Ag Alloy
Contact Form	SPST, SPDT	DPST, DPDT	3PST, 3PDT	DPST, DPDT	3PST, 3PDT

Application

Vending Machine, Cooking Appliances, Office Machine, Domestic Appliances, Control Equipment, etc

Performance (at Initial Value)

- Contact Resistance 100 mΩ Max. @1A,6VDC
- Operate Time..... 15 mSec. Max.
- Release Time 10 mSec. Max.
- Dielectric Strength:
Between Coil & Contact..... 1,500VAC at 50/60 Hz for one minute
Between Contacts 1,000VAC at 50/60 Hz for one minute
- Surge Strength..... 1,500V (between Coil & Contact 1.2x50μSec.)
- Insulation Resistance 100 MegaΩ Min. at 500VDC
- Max. On/Off Switching:
Electrical..... 6 Cycles per Minute
Mechanical 300 Cycles per Minute
- Temperature Range..... -45~+70°C
- Humidity Range 45~85% RH.
- Coil Temperature Rise..... 50°C Max.

- Vibration:
Endurance 10 to 55 Hz dual amplitude width 1.5mm
Error Operation 10 to 55 Hz dual amplitude width 1.5mm
- Shock:
Endurance 1,000 m/S²
Error Operation 100 m/S²
- Life Expectancy:
Mechanical..... 10⁷ Operations at No Load condition
Electrical 10⁵ Operations at Rated Resistive Load
- Weight.....About 85 g

Accessories & Sockets

- PPF-11A/AE..... See Page 178

Safety Standard & File Number

- RPT
- UL & C-UL..... E175730
- RP
- NIL.

Coil Specification (at 20°C)

Coil Sensitivity	Coil Voltage Code	Nominal Voltage (VAC/VDC)	Nominal Current (mA)		Coil Resistance ($\Omega \pm 10\%$)	Power Consumption	Pull-In Voltage	Drop-Out Voltage	Maximum Allowable Voltage
			50 Hz	60 Hz					
RP/T (VAC) 1P, 2P	01	6	309.1	261.5	4.2	Abt. 2.9~3.5VA	85% Maximum	30% Maximum	110% Maximum
	02	12	200.2	169.4	18				
	03	24	129.7	109.7	72				
	06	120	28.0	24.3	1,700				
	08	240	13.2	11.3	7,200				
RP/T (VAC) 3P	01	6	371.4	317.3	3.2	Abt. 3.8~4.6VA	85% Maximum	30% Maximum	110% Maximum
	02	12	253.3	216.4	14				
	03	24	172.8	147.6	55				
	05/06	120	37.7	32.0	1,300				
	08	240	16.6	13.9	5,510				
RP/T (VDC)	02	12	100.0		120	Abt. 1.2 W	80% Maximum	10% Maximum	110% Maximum
	03	24	50.8		472				
	04	48	26.7		1,800				
	05	110	11.0		10,000				
	06	120	12.0		10,000				

Ordering Information

RPT - N 01 D M S F L T D	Diode:	Nil: Without Diode D: With Diode Selection
	Touch Button:	Nil: Without Test Button T: With Test Button
	LED:	Nil: Without LED L: With LED Selection
	Case Type:	Nil: Standard Square Shape F: Top with Flanged Case H: Side with Flanged Case
	Terminal Type:	S: Quick Connect Tabs (width 4.80mm) W: Quick Connect Tabs (width 6.50mm)
	Contact Form:	Nil: Form C M: Form A B: Form B
	Coil Type:	D: Standard DC A: Standard AC
	Coil Code:	01: 6V, 02: 12V, 03: 24V, 04: 48V, 05: 110V, 06: 120V, 08: 240V
	Number of Pole:	N: Common 2: 2 Poles 3: 3 Poles
	Type:	RP RPT

RP/RPT

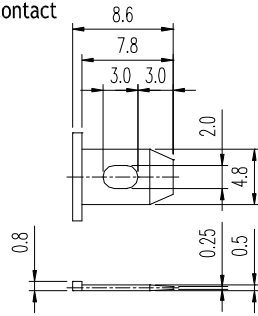
Classification

Model	RP (T)		
Coil Type	AC		
Contact Form	1 Pole	2 Poles	3 Poles(RP)
Number of Poles	1A / 1B	2C / 2A / 2B	3C / 3A / 3B
Terminal Type	RP(T)-N <input type="checkbox"/> <input type="checkbox"/> AS/AMS/ABS RP(T)-N <input type="checkbox"/> <input type="checkbox"/> AW/AMW/ABW	RP(T)-2 <input type="checkbox"/> <input type="checkbox"/> AS/AMS/ABS RP(T)-2 <input type="checkbox"/> <input type="checkbox"/> AW/AMW/ABW	RP(T)-3 <input type="checkbox"/> <input type="checkbox"/> AS/AMS/ABS RP(T)-3 <input type="checkbox"/> <input type="checkbox"/> AW/AMW/ABW
Case Type	RP(T)-N/2/3 <input type="checkbox"/> <input type="checkbox"/> ASH/AMSH/ABSH RP(T)-N/2/3 <input type="checkbox"/> <input type="checkbox"/> ASF/AMSF/ABSF	RP(T)-N/2/3 <input type="checkbox"/> <input type="checkbox"/> AWH/AMWH/ABWH RP(T)-N/2/3 <input type="checkbox"/> <input type="checkbox"/> AWF/AMWF/ABWF	
LED	RP(T)-N/2/3 <input type="checkbox"/> <input type="checkbox"/> ASFL/AMSFL/ABSFL RP(T)-N/2/3 <input type="checkbox"/> <input type="checkbox"/> AWFL/AMWFL/ABWFL		
Touch Button	RP(T)-N/2/3 <input type="checkbox"/> <input type="checkbox"/> ASLT/AMSLT/ABSLT RP(T)-N/2/3 <input type="checkbox"/> <input type="checkbox"/> ASFLT/AMSFLT/ABSFLT RP(T)-N/2/3 <input type="checkbox"/> <input type="checkbox"/> AWFLT/AMWFLT/ABWFLT		
Diode	RP(T)-N/2/3 <input type="checkbox"/> <input type="checkbox"/> ASFLTD/AMSFLTD/ABSFLTD RP(T)-N/2/3 <input type="checkbox"/> <input type="checkbox"/> AWFLTD/AMWFLTD/ABWFLTD		

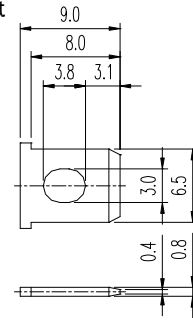
Model	RP (T)		
Coil Type	DC		
Contact Form	1 Pole	2 Poles	3 Poles
Number of Poles	1A / 1B	2C / 2A / 2B	3C / 3A / 3B
Terminal Type	RP(T)-N <input type="checkbox"/> <input type="checkbox"/> DS/DMS/DBS RP(T)-N <input type="checkbox"/> <input type="checkbox"/> DW/DMW/DBW	RP(T)-2 <input type="checkbox"/> <input type="checkbox"/> DS/DMS/DBS RP(T)-2 <input type="checkbox"/> <input type="checkbox"/> DW/DMW/DBW	RP-3 <input type="checkbox"/> <input type="checkbox"/> DS/DMS/DBS RP-3 <input type="checkbox"/> <input type="checkbox"/> DW/DMW/DBW
Case Type	RP(T)-N/2/3 <input type="checkbox"/> <input type="checkbox"/> DSH/DMSH/DBSH RP(T)-N/2/3 <input type="checkbox"/> <input type="checkbox"/> DSF/DMSF/DBSF	RP(T)-N/2/3 <input type="checkbox"/> <input type="checkbox"/> WH/DMWH/DBWH RP(T)-N/2/3 <input type="checkbox"/> <input type="checkbox"/> DWF/DMWF/DBWF	
LED	RP(T)-N/2/3 <input type="checkbox"/> <input type="checkbox"/> DSFL/DMSFL/DBSFL RP(T)-N/2/3 <input type="checkbox"/> <input type="checkbox"/> DWFL/DMWFL/DBWFL		
Touch Button	RP(T)-N/2/3 <input type="checkbox"/> <input type="checkbox"/> DSLTD/DMSLTD/DBSLTD RP(T)-N/2/3 <input type="checkbox"/> <input type="checkbox"/> DSFLT/DMSFLT/DBSFLT RP(T)-N/2/3 <input type="checkbox"/> <input type="checkbox"/> DWFLT/DMWFLT/DBWFLT		
Diode	RP(T)-N/2/3 <input type="checkbox"/> <input type="checkbox"/> DSFLTD/DMSFLTD/DBSFLTD RP(T)-N/2/3 <input type="checkbox"/> <input type="checkbox"/> DWFLTD/DMWFLTD/DBWFLTD		

Terminal Dimensions ($\leq 5\text{mm} \pm 0.2\text{mm}$, $> 5\text{mm} \pm 0.3\text{mm}$, the tolerance of PCB thru hole: $+0.1\text{mm}$)

.189" (4.8mm)
Quick Contact

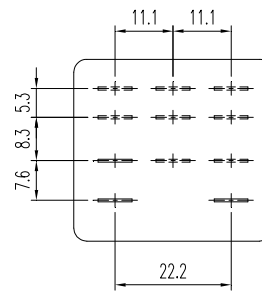
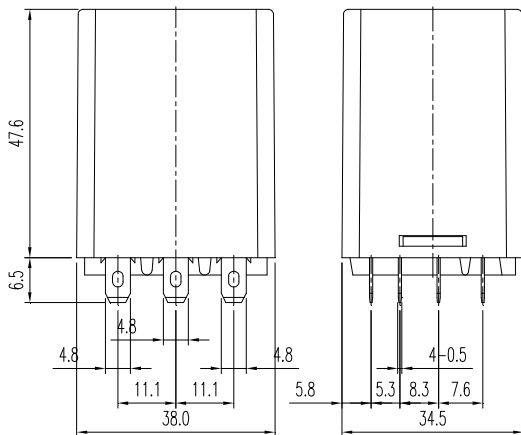


.256" (6.5mm)
Quick Contact

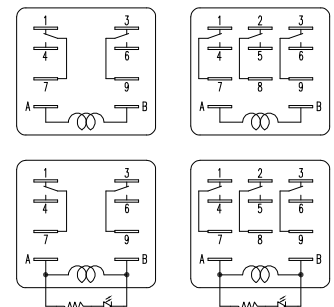


Dimension ($\leq 5\text{mm} \pm 0.2\text{mm}$, $> 5\text{mm} \pm 0.3\text{mm}$, the tolerance of PCB thru hole: $+0.1\text{mm}$)

RP

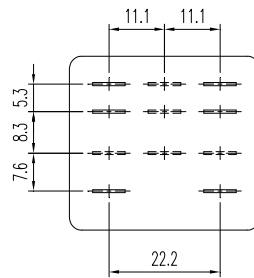
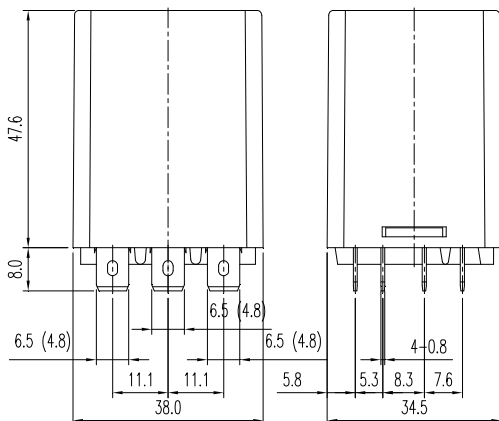


BOTTOM VIEW

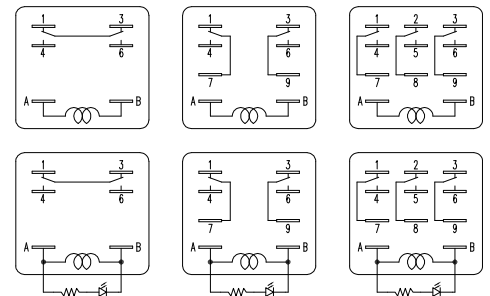


BOTTOM VIEW

RPT



BOTTOM VIEW



BOTTOM VIEW