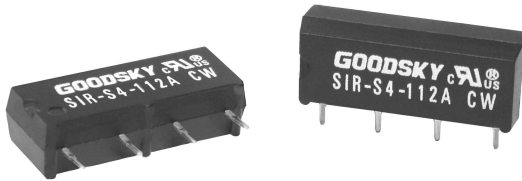


## Main Feature



1. Epoxy molded Single-In-Line package.
2. Mounting space is less by half compared to Dual-In-Line package.
3. Completely washable.
4. Provide high speed, miniature and cost effective switching solution.
5. Comply with RoHS and REACH regulations

## Contact Rating

Load Type	SIR/SID
Rated Load (Resistive)	0.5A 100VDC
Rated Carrying Current	0.5A
Max. Allowable Voltage	100 VDC
Max. Allowable Current	1A
Max. Allowable Power Force	10 VA
Min. Switching Load	DC 1V, 1mA
Contact Material	Rh Alloy
Contact Form	SPST

## Application

Security System, Modem and Telecommunication Products

### Performance (at Initial Value)

- Contact Resistance ..... 150 mΩ Max. @100mA, 6VDC
- Operate Time ..... 0.5 mSec. Max.
- Release Time ..... 0.5 mSec. Max.
- Dielectric Strength:
  - Between Coil & Contact.....1,400 VDC
  - Between Contacts..... 250 VDC
- Insulation Resistance ..... 100 MΩ Minimum

- Temperature Range:
  - Operating .....-40~+85 °C
  - Storage.....-40~125 °C
- Humidity Range.....45~85% RH.
- Vibration .....20 G
- Shock ..... 100 G
- Life Expectancy:
  - Electrical.....10<sup>8</sup> Operations at ref. 10VDC, 10mA
- Weight.....About 1.6g

### Safety Standard & File Number

- UL & C-UL.....E141060

## Coil Specification (at 20 °C)

Coil Sensitivity	Nominal Voltage (VDC)	Nominal Current (mA)	Coil Resistance ( $\Omega \pm 10\%$ )	Power Consumption (mW)	Pull-In Voltage (VDC)	Drop-Out Voltage (VDC)	Maximum Allowable Voltage (VDC)
SIR	5	10	500	50	3.75	0.80	16
	12	12	1,000	144	8.60	1.00	20
	24	11	2,150	268	18.00	2.00	32

## Ordering Information

SIR - S 4 - 1 12 A L

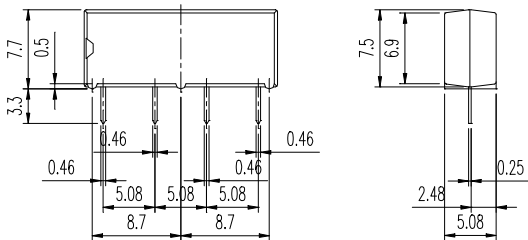
<b>Lead Spacing:</b>	<b>Nil:</b> Standard <b>L:</b> Coil Lead Spacing 10.16mm
<b>Contact Form:</b>	<b>A:</b> One Form A
<b>Coil Voltage:</b>	<b>05:</b> 5V, <b>12:</b> 12V, <b>24:</b> 24V
<b>Number of Pole:</b>	<b>1:</b> One Pole
<b>Lead Number:</b>	<b>4:</b> 4 Leads
<b>Coil Construction:</b>	<b>S:</b> Standard
<b>Type:</b>	<b>SIR:</b> Without Diode <b>SID:</b> With Diode

## Classification

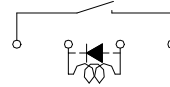
Model	SIR/D			
Coil Construction	S: Standard		D: With Diode	
Lead Type	4 Leads		4Leads	
Contact Form	1A		1A	
Lead Spacing	Nil: Standard	L: 10.16mm	Nil: Standard	L: 10.16mm
Ordering Type	SIR-S4-1□□A	SIR-S4-1□□AL	SID-S4-1□□A	SID-S4-1□□AL

## Dimension ( $\leq 5\text{mm} \pm 0.2\text{mm}$ , $> 5\text{mm} \pm 0.3\text{mm}$ , the tolerance of PCB thru hole: $+0.1\text{mm}$ )

SIR/D-S4-1□□A

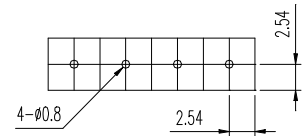


Circuit Schematic



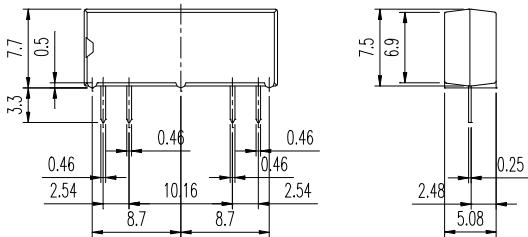
(TOP View)

PCB Layout

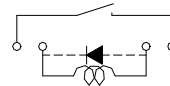


(TOP View)

SIR/D-S4-1□□AL

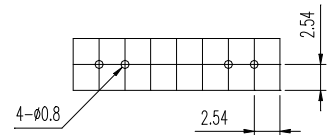


Circuit Schematic



(TOP View)

PCB Layout



(TOP View)